

COMMUNITY

2009-2010

ADOPTED
4/14/2009

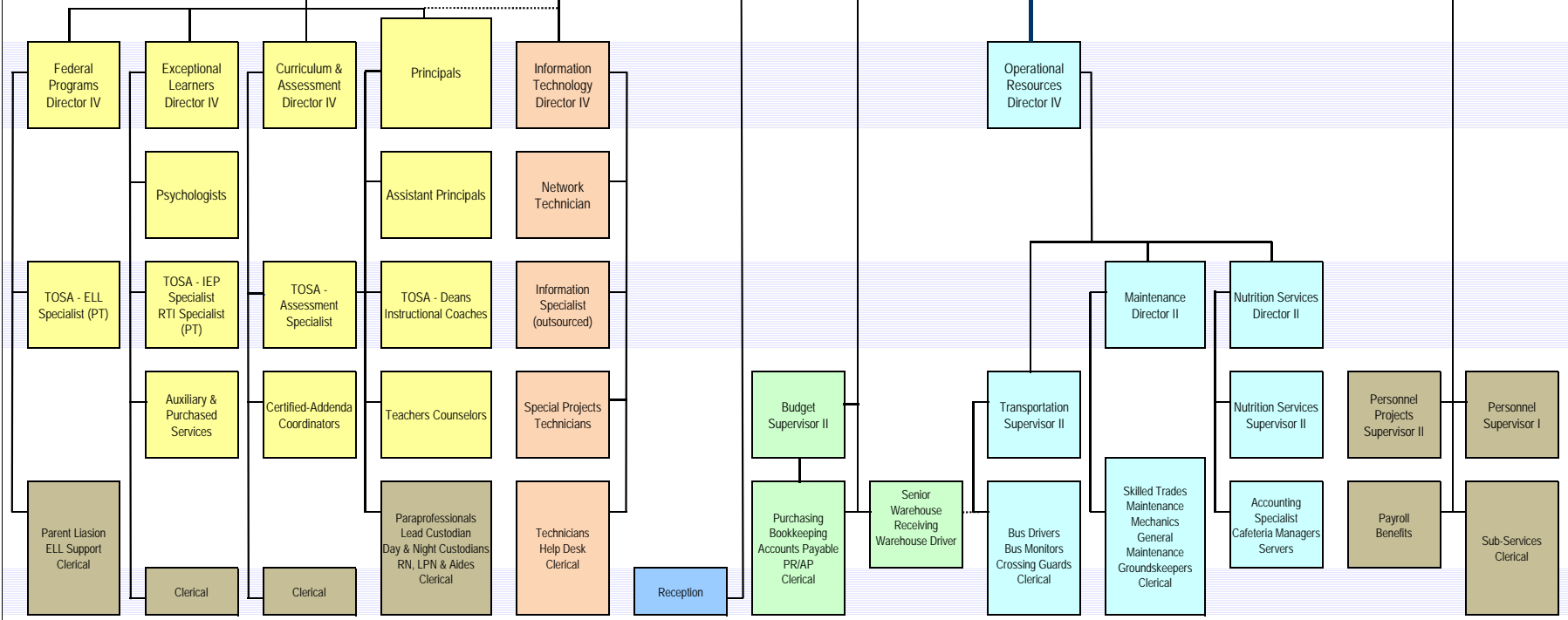
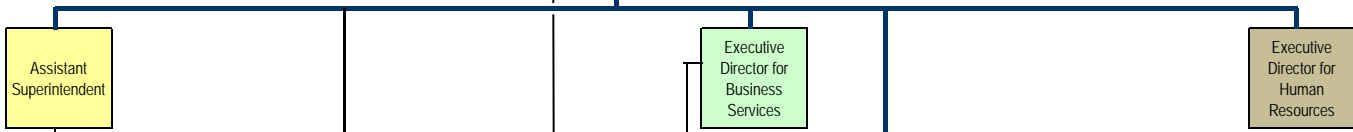


ADOPTED
4/14/2009

GOVERNING BOARD

SUPERINTENDENT

Administrative Assistant



Every Student a Learner; Safe and Orderly Environment; Parents as Partners; Competent, Dedicated and Caring Staff; A Meaningfully Involved Community; and A Highly Effective Organization